

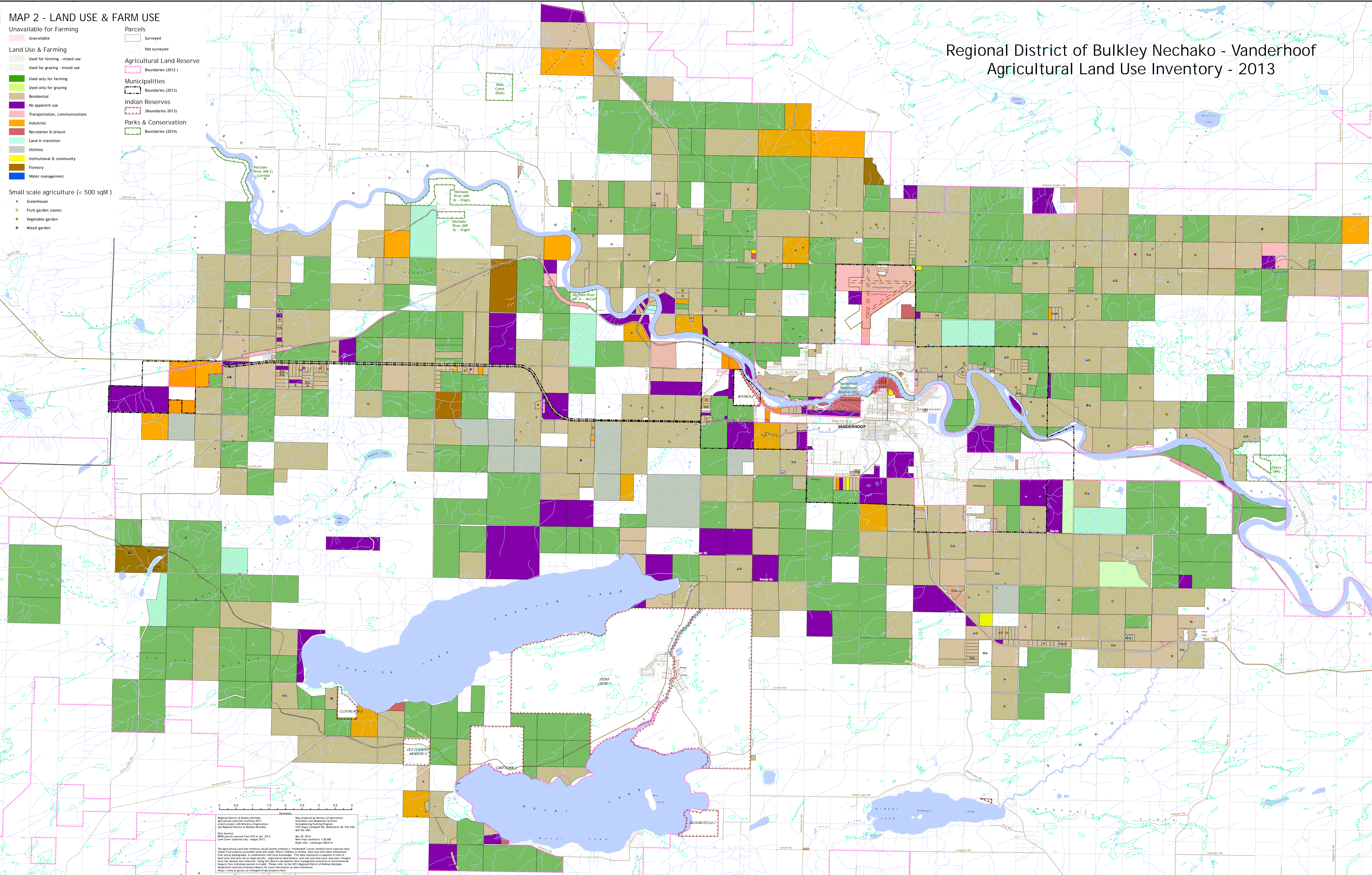
MAP 2 - LAND USE & FARM USE

- Unavailable for Farming**
 - Unavailable
- Land Use & Farming**
 - Used for farming - mixed use
 - Used for grazing - mixed use
 - Used only for farming
 - Used only for grazing
 - Residential
 - No apparent use
 - Transportation, communications
 - Industrial
 - Recreation & leisure
 - Land in transition
 - Utilities
 - Institutional & community
 - Forestry
 - Water management
- Parcels**
 - Surveyed
 - Not surveyed
- Agricultural Land Reserve**
 - Boundaries (2012)
- Municipalities**
 - Boundaries (2013)
- Indian Reserves**
 - Boundaries (2013)
- Parks & Conservation**
 - Boundaries (2014)

Small scale agriculture (< 500 sqM)

- Greenhouse
- Fruit garden (none)
- Vegetable garden
- Mixed garden

**Regional District of Bulkley Nechako - Vanderhoof
Agricultural Land Use Inventory - 2013**



Regional District of Bulkley Nechako
 Agricultural Land Use Inventory 2013
 A joint project with Ministry of Agriculture
 and Rural Development
 Data Source:
 1:500 parcels sourced from KIS to Jan. 2013.
 Land Cover collected July - August 2013.
 Map 2013 created at 1:18,000
 Project No. 2013-0001
 The Agricultural Land Use Inventory (ALUI) System employs a "watershed" survey method which captures data visible from publicly accessible lands and roads. Where visibility is limited, data may have been interpreted from aerial photography in conjunction with local knowledge. This data represents a snapshot in time of land cover and land use on regional farms. Land parcel boundaries, land use and land cover may have changed since the data was collected. Land use data is not intended for use in regulatory or environmental assessment. For more information on the ALUI System, please contact the Regional District of Bulkley Nechako. Vanderhoof Land Use Inventory Report for more information on data limitations.
<http://www.agric.gov.bc.ca/research/landuseinventory.htm>