

Zoning Bylaw 1800, 2020

Schedule "B" Zoning Map Series Electoral Area "B"

Produced by the Regional District of Bulkley-Nechako

Zoning

- Single Family Residential (R1)
- Multi Family Residential (R2)
- Waterfront Residential I (R3)
- Waterfront Residential II (R4)
- Country Residential (R5)
- Rural Residential (R6)
- Manufactured Home Park (R7)
- Hudson Bay Mountain Recreational Residential (R8)
- Hudson Bay Mountain Single Family Residential (R9)
- Hudson Bay Mountain Multiple Family Residential (R10)
- Bare Land Strata Residential (R11)
- Small Holdings (H1)
- Small Holdings - Additional Dwelling (H1A)
- Small Holdings - Industrial Shop (H1B)
- Large Holdings (H2)
- Agricultural (AG1)
- Rural Resource (RB1)
- General Commercial (C1)
- Local Commercial (CIA)
- Highway Commercial (C2)
- Highway Commercial - Manufactured Home Dealer (C2A)
- Tourist Commercial (C3)
- Strata Resort Commercial (C4)
- Light Industrial (M1)
- Light Industrial - Contracting (M1A)
- Heavy Industrial (M2)
- Agricultural Industry (M3)
- Civic/Institutional (P1)
- Special Civic/Institutional (P1A)
- Recreation (P2)
- Special Recreation (P2A)
- Airport (A1)
- Wind Farm (WF)

Other Features

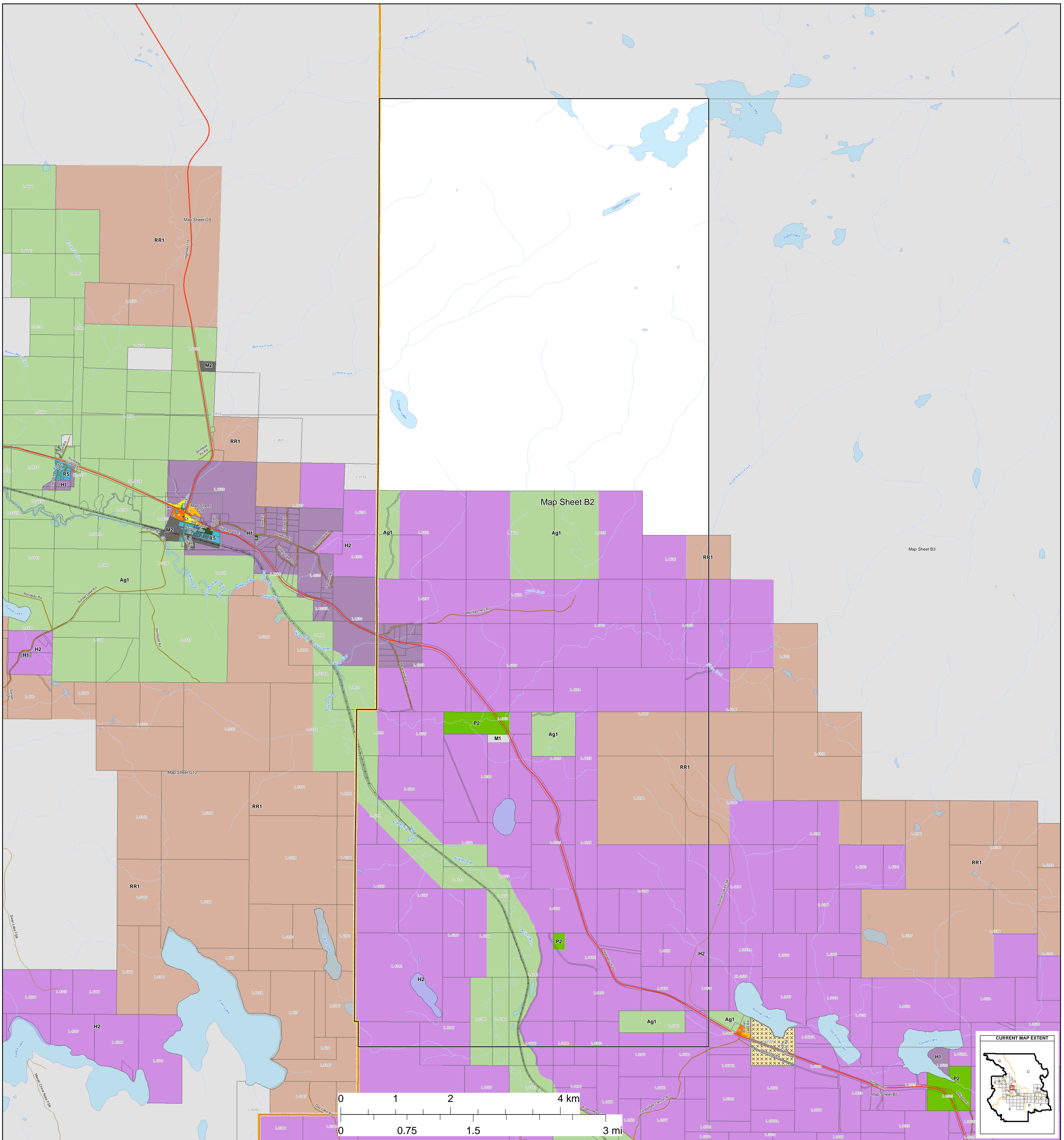
- Municipalities
- Electoral Areas
- Cadastre
- Federal Indian Reserves

Transportation

- Street
- Highway
- Ferry
- FSR
- Secondary Road
- Railroad

REV	DESCRIPTION	DATE	APPROVED	SHEETS APPROVED	REVISIONS
1	Amendment 1946	15 JUL 2021		1 (B Index), 7 (B7), 11 (B11)	
2	Amendment 1997	13 JUL 2023		1 (B Index), 6 (B6), 7 (B7), 11 (B11)	
3	Amendment 1998	13 JUL 2023		1 (B Index), 7 (B7), 11 (B11)	
4	Amendment 2019	23 NOV 2023		1 (B Index), 7 (B7), 11 (B11)	

I hereby certify that this is Schedule "B" of Bylaw No. 1800, 2020 (Electoral Area "B" map book)
 Deputy Corporate Administrator
 Date: Nov. 23, 2023



Zoning Bylaw 1800, 2020

Schedule "B"

Zoning Map Series

Electoral Area "B"

Produced by the Regional District of Bulkley-Nechako

Zoning

- Single Family Residential (R1)
- Multiple Family Residential (R2)
- Waterfront Residential I (R3)
- Waterfront Residential II (R4)
- Country Residential (R5)
- Rural Residential (R6)
- Manufactured Home Park (R7)
- Hudson Bay Mountain Recreational Residential (R8)
- Hudson Bay Mountain Single Family Residential (R9)
- Hudson Bay Mountain Multiple Family Residential (R10)
- Bare Land Strata Residential (R11)

Other Features

- Municipalities
- Electoral Areas
- Cadastral
- Federal Indian Reserves

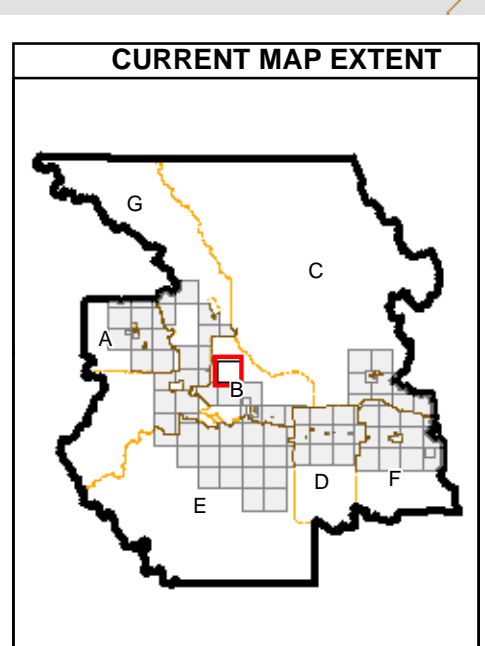
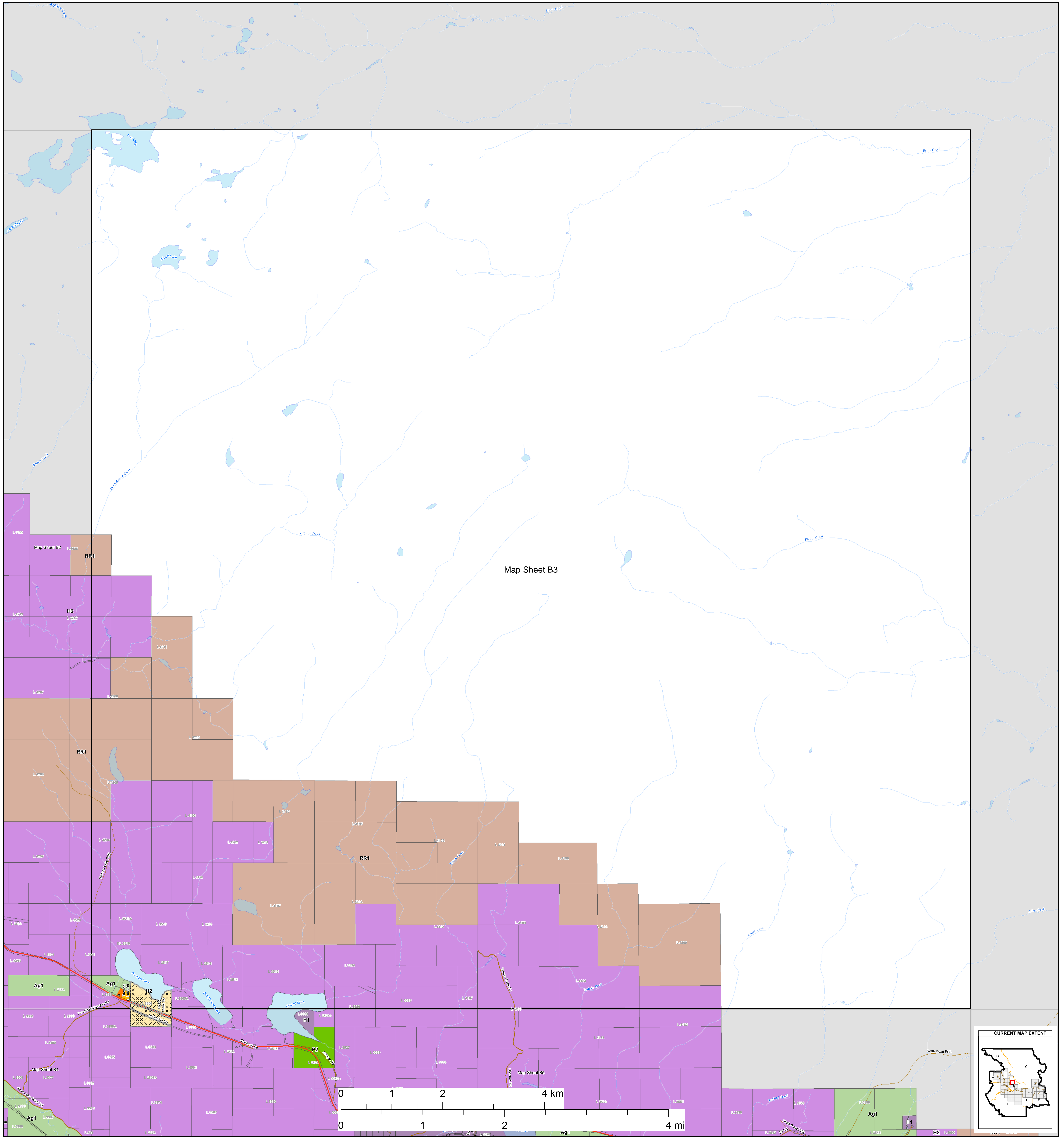
- Small Holdings (H1)
- Small Holdings - Additional Dwelling (H1A)
- Small Holdings - Industrial Shop (H1B)
- Large Holdings (H2)
- Agricultural (Ag1)
- Rural Resource (RR1)
- General Commercial (C1)
- Local Commercial (C1A)
- Highway Commercial (C2)
- Highway Commercial - Manufactured Home Dealer (C2A)
- Tourist Commercial (C3)

Transportation

- Street
- Highway
- Ferry
- FSR
- Secondary Road
- Railways

- Strata Resort Commercial (C4)
- Light Industrial (M1)
- Light Industrial - Contracting (M1A)
- Heavy Industrial (M2)
- Agricultural Industry (M3)
- Civic/Institutional (P1)
- Special Civic/Institutional (P1A)
- Recreation (P2)
- Special Recreation (P2A)
- Airport (A1)
- Wind Farm (WF)

REVISEMENTS			
REV	DESCRIPTION	DATE	APPROVED



Zoning Bylaw 1800, 2020

Schedule "B"

Zoning Map Series

Electoral Area "B"

Produced by the Regional District of Bulkley-Nechako

Zoning

- Single Family Residential (R1)
- Multiple Family Residential (R2)
- Waterfront Residential I (R3)
- Waterfront Residential II (R4)
- Country Residential (R5)
- Rural Residential (R6)
- Manufactured Home Park (R7)
- Hudson Bay Mountain Recreational Residential (R8)
- Hudson Bay Mountain Single Family Residential (R9)
- Hudson Bay Mountain Multiple Family Residential (R10)
- Bare Land Strata Residential (R11)
- Small Holdings (H1)
- Small Holdings - Additional Dwelling (H1A)
- Small Holdings - Industrial Shop (H1B)
- Large Holdings (H2)
- Agricultural (Ag1)
- Rural Resource (RR1)
- General Commercial (C1)
- Local Commercial (C1A)
- Highway Commercial (C2)
- Highway Commercial - Manufactured Home Dealer (C2A)
- Tourist Commercial (C3)
- Strata Resort Commercial (C4)
- Light Industrial (M1)
- Light Industrial - Contracting (M1A)
- Heavy Industrial (M2)
- Agricultural Industry (M3)
- Civic/Institutional (P1)
- Special Civic/Institutional (P1A)
- Recreation (P2)
- Special Recreation (P2A)
- Airport (A1)
- Wind Farm (WF)

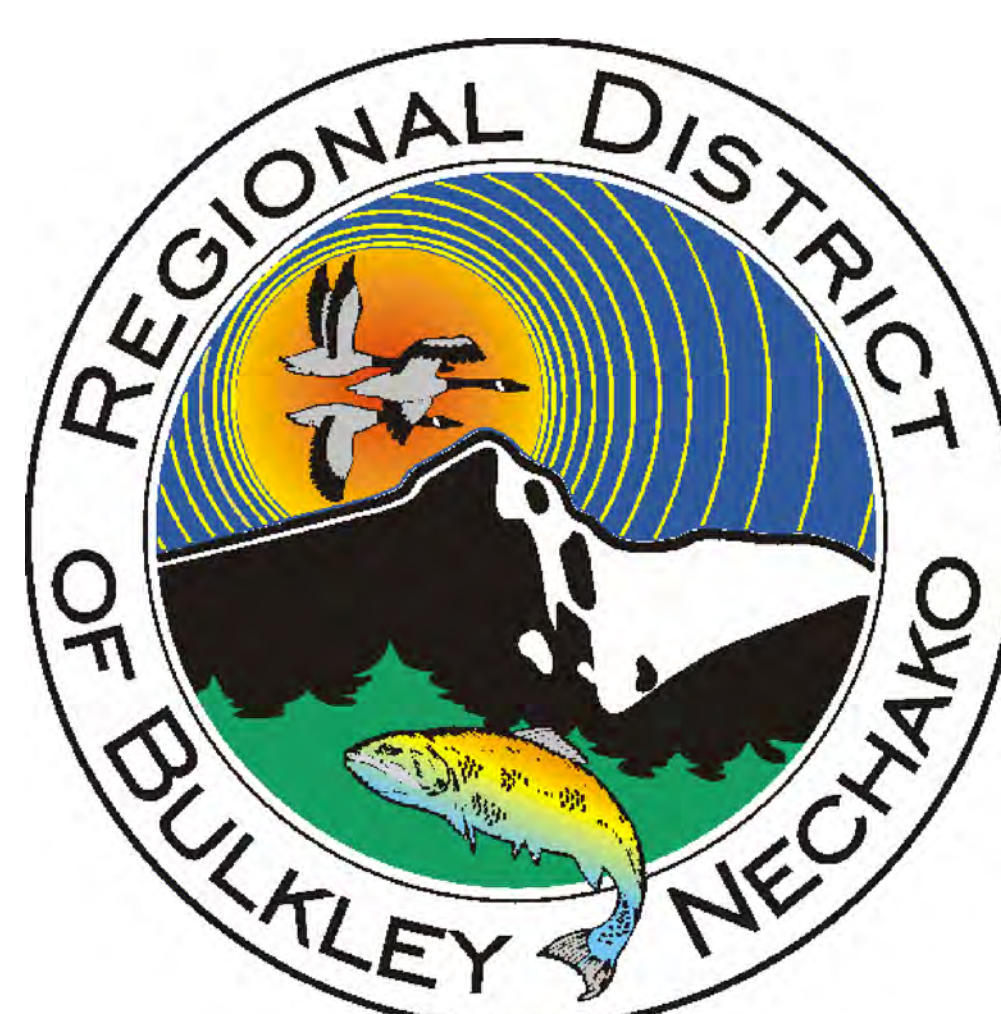
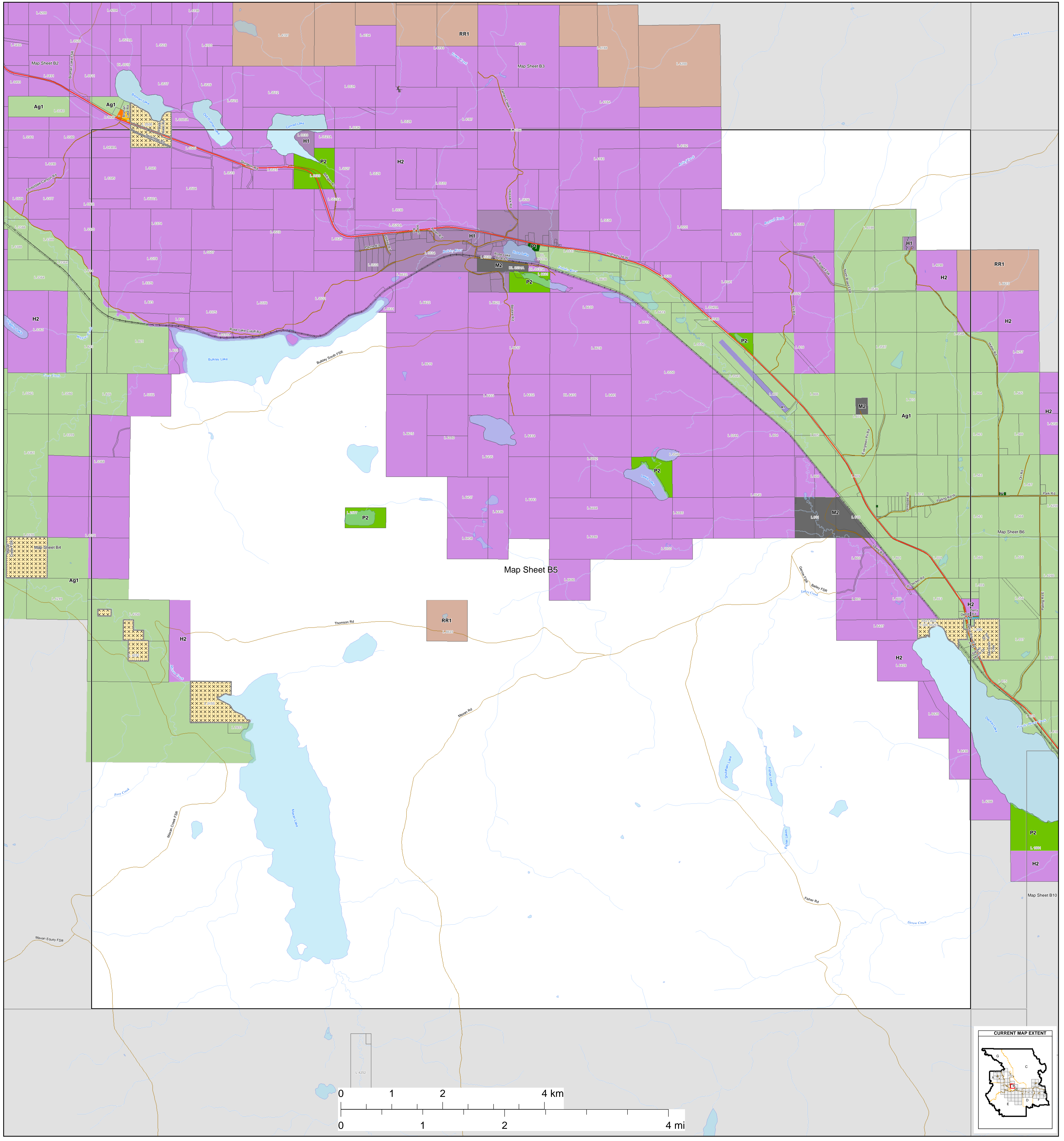
Other Features

- Municipalities
- Electoral Areas
- Cadastral
- Federal Indian Reserves

Transportation

- Street
- Highway
- Ferry
- FSR
- Secondary Road
- Railways

REVISEMENTS			
REV	DESCRIPTION	DATE	APPROVED



Zoning Bylaw 1800, 2020

Schedule "B"

Zoning Map Series

Electoral Area "B"

Zoning

- Single Family Residential (R1)
- Small Holdings (H1)
- Strata Resort Commercial (C4)
- Multiple Family Residential (R2)
- Small Holdings - Additional Dwelling (H1A)
- Light Industrial (M1)
- Waterfront Residential I (R3)
- Small Holdings - Industrial Shop (H1B)
- Light Industrial - Contracting (M1A)
- Waterfront Residential II (R4)
- Large Holdings (H2)
- Heavy Industrial (M2)
- Country Residential (R5)
- Agricultural (Ag1)
- Agricultural Industry (M3)
- Rural Residential (R6)
- Rural Resource (RR1)
- Civic/Institutional (P1)
- Manufactured Home Park (R7)
- General Commercial (C1)
- Special Civic/Institutional (P1A)
- Hudson Bay Mountain Recreational Residential (R8)
- Local Commercial (C1A)
- Recreation (P2)
- Hudson Bay Mountain Single Family Residential (R9)
- Highway Commercial (C2)
- Special Recreation (P2A)
- Hudson Bay Mountain Multiple Family Residential (R10)
- Highway Commercial - Manufactured Home Dealer (C2A)
- Airport (A1)
- Bare Land Strata Residential (R11)
- Tourist Commercial (C3)
- Wind Farm (WF)

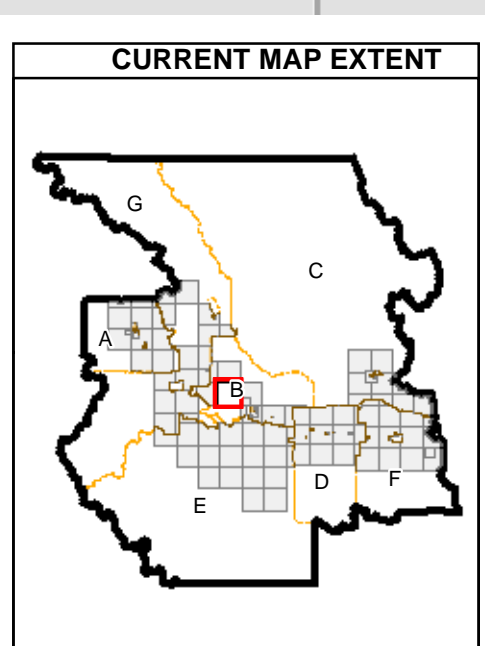
Other Features

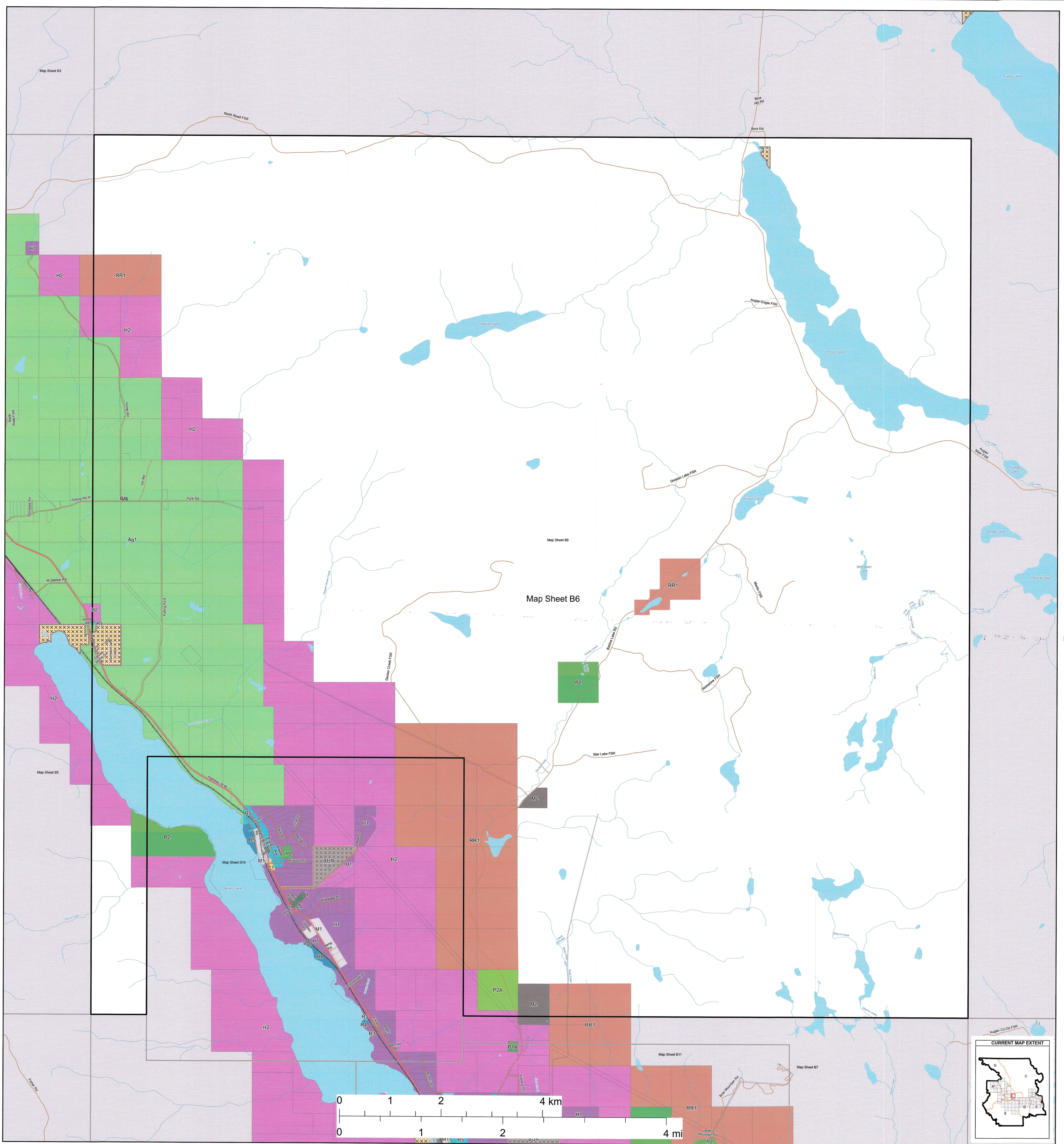
- Municipalities
- Electoral Areas
- Cadastre
- Federal Indian Reserves

Transportation

- Street
- Highway
- Ferry
- FSR
- Secondary Road
- Railways

REVISEMENTS			
REV	DESCRIPTION	DATE	APPROVED





Zoning Bylaw 1800, 2020

Schedule "B" Zoning Map Series Electoral Area "B"

Produced by the Regional District of Bulkley-Nechako

Zoning

- | | |
|---|---|
| <ul style="list-style-type: none"> Single Family Residential (R1) Multi-Family Residential (R2) Waterfront Residential I (R3) Waterfront Residential II (R4) Country Residential (R5) Rural Residential (R6) Manufactured Home Park (R7) Hudson Bay Mountain Recreational Residential (R8) Hudson Bay Mountain Single Family Residential (R9) Hudson Bay Mountain Multiple Family Residential (R10) Bare Land Strata Residential (R11) | <ul style="list-style-type: none"> Small Holdings (H1) Small Holdings - Additional Dwelling (H1A) Small Holdings - Industrial Shop (H1B) Large Holdings (H2) Agricultural (Ag1) Rural Resource (RR1) General Commercial (C1) Local Commercial (C1A) Highway Commercial (C2) Highway Commercial - Manufactured Home Dealer (C2A) Tourist Commercial (C3) Strata Resort Commercial (C4) Light Industrial (M1) Light Industrial - Contracting (M1A) Heavy Industrial (M2) Agricultural Industry (M3) Civic/Institutional (P1) Special Civic/Institutional (P1A) Recreation (P2) Special Recreation (P2A) Airport (A1) Wind Farm (WF) |
|---|---|

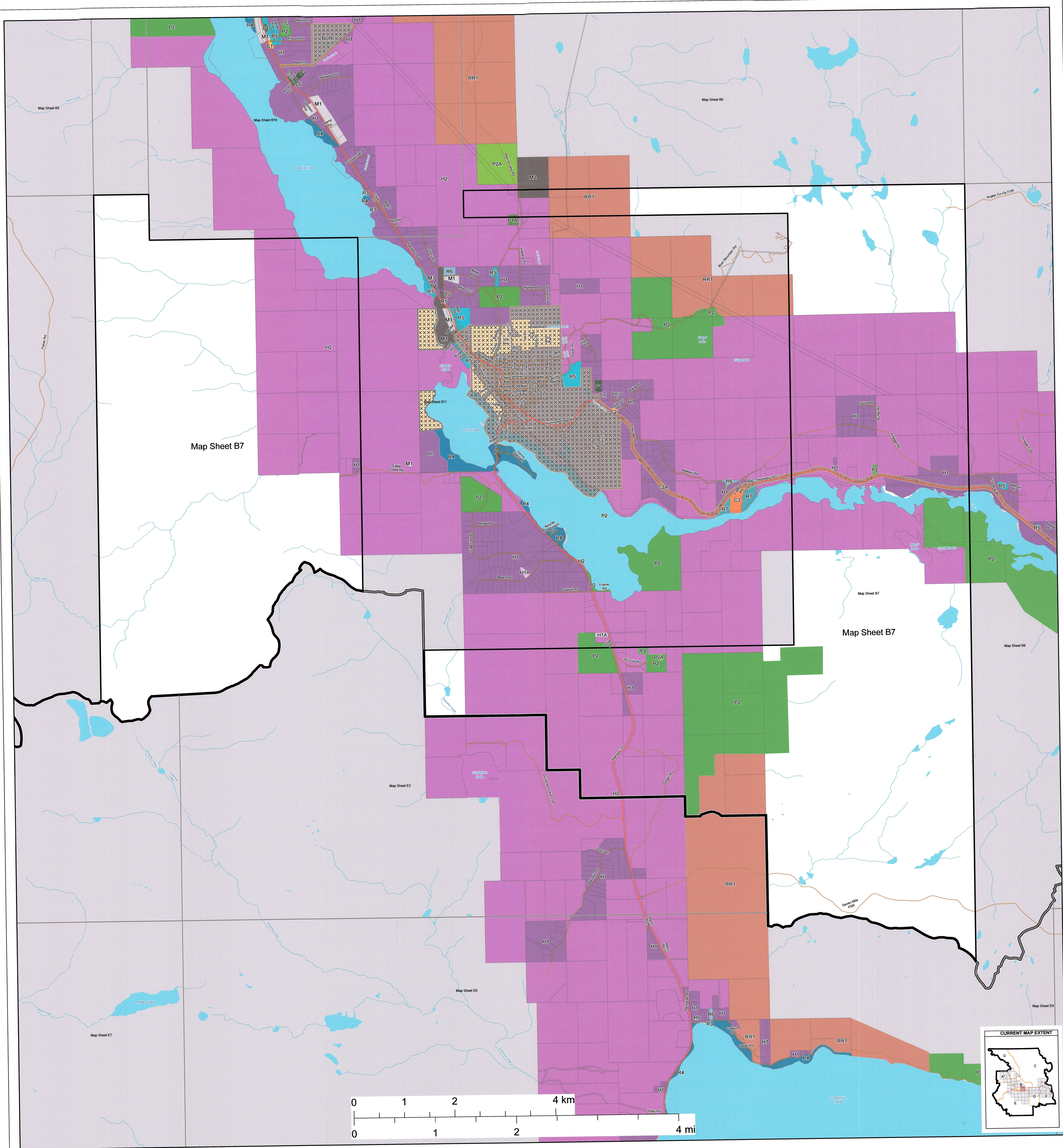
Other Features

- Municipalities
- Electoral Areas
- Cadastral
- Federal Indian Reserves

Transportation

- Street
- Highway
- Ferry
- FSR
- Secondary Road
- Railroad

REV	DESCRIPTION	DATE	APPROVED
1	Amendment 1998	13 JUL 2023	[Signature]



Zoning Bylaw 1800, 2020

Schedule "B" Zoning Map Series Electoral Area "B"

Produced by the Regional District of Bulkley-Nechako

Zoning

- Single Family Residential (R1)
- Multi Family Residential (R2)
- Waterfront Residential I (R3)
- Waterfront Residential II (R4)
- Country Residential (R5)
- Rural Residential (R6)
- Manufactured Home Park (R7)
- Hudson Bay Mountain Recreational Residential (R8)
- Hudson Bay Mountain Single Family Residential (R9)
- Hudson Bay Mountain Multiple Family Residential (R10)
- Bare Land Strata Residential (R11)
- Small Holdings (H1)
- Small Holdings - Additional Dwelling (H1A)
- Small Holdings - Industrial Shop (H1B)
- Large Holdings (H2)
- Agricultural (Ag1)
- Rural Resource (RR1)
- General Commercial (C1)
- Local Commercial (C1A)
- Highway Commercial (C2)
- Highway Commercial - Manufactured Home Dealer (C2A)
- Tourist Commercial (C3)
- Strata Resort Commercial (C4)
- Light Industrial (M1)
- Light Industrial - Contracting (M1A)
- Heavy Industrial (M2)
- Agricultural Industry (M3)
- Civic/Institutional (P1)
- Special Civic/Institutional (P1A)
- Recreation (P2)
- Special Recreation (P2A)
- Airport (A1)
- Wind Farm (WF)

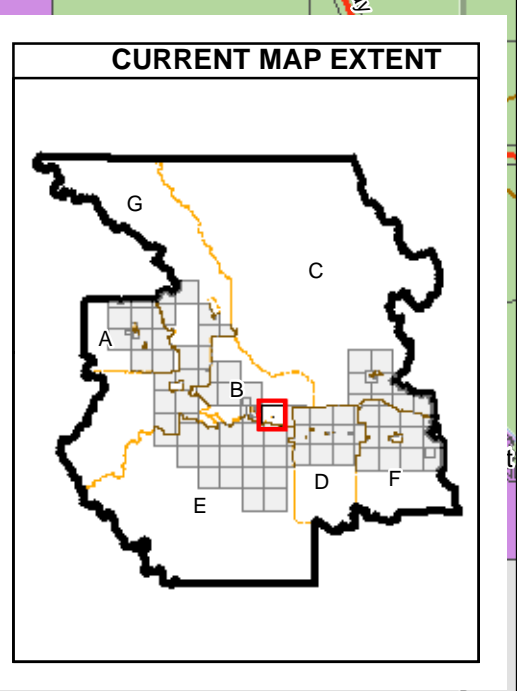
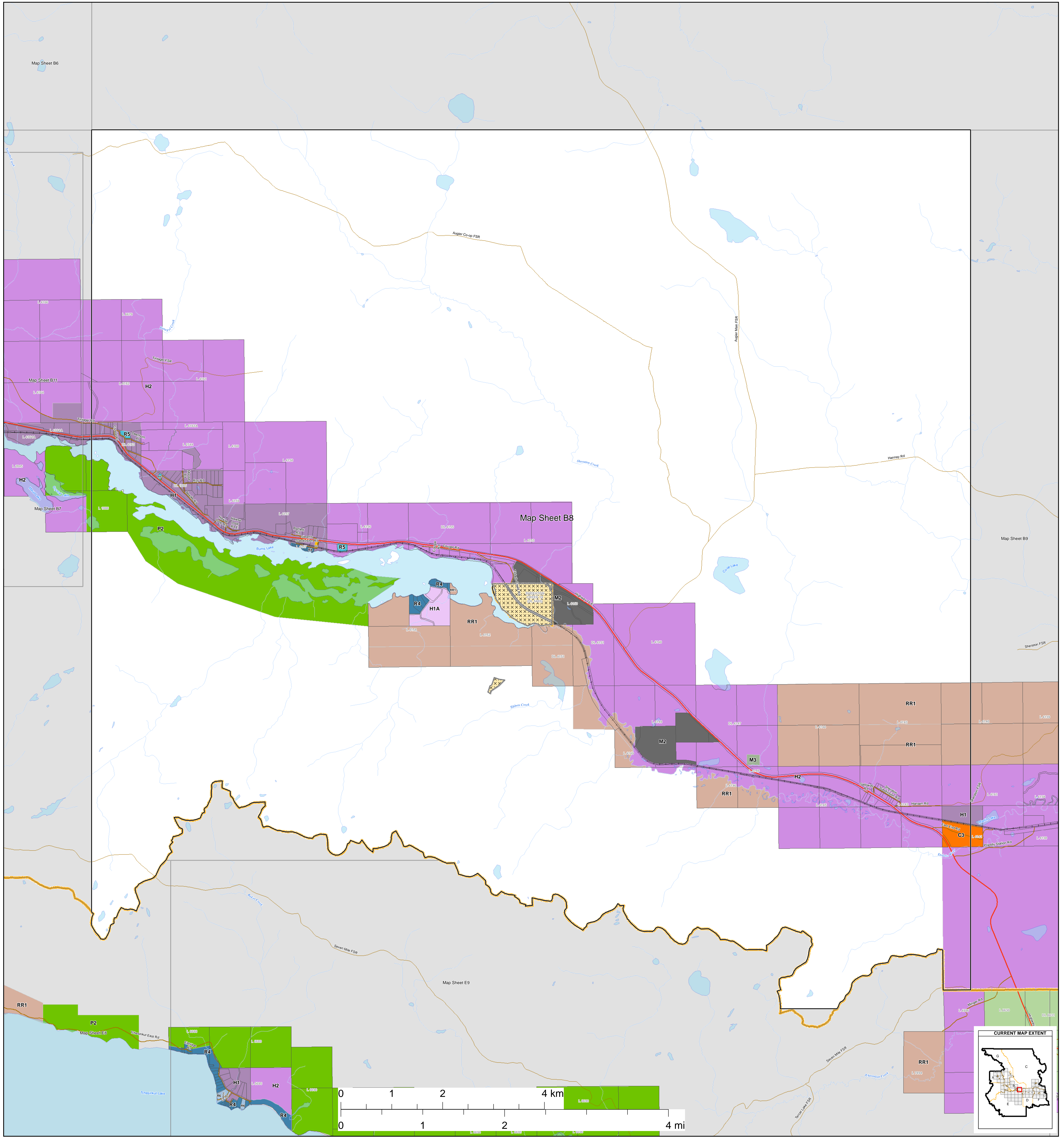
Other Features

- Municipalities
- Electoral Areas
- Cadastre
- Federal Indian Reserves

Transportation

- Street
- Highway
- Ferry
- FSR
- Secondary Road
- Railroad

REV	DESCRIPTION	DATE	APPROVED
1	Amendment 1946	15 Jul 2023	
2	Amendment 1997	13 Jul 2023	
3	Amendment 1998	13 Jul 2023	
4	Amendment 2019	23 Nov 2023	J.P.



Zoning Bylaw 1800, 2020

Schedule "B"

Zoning Map Series

Electoral Area "B"

Zoning

- Single Family Residential (R1)
- Multiple Family Residential (R2)
- Waterfront Residential I (R3)
- Waterfront Residential II (R4)
- Country Residential (R5)
- Rural Residential (R6)
- Manufactured Home Park (R7)
- Hudson Bay Mountain Recreational Residential (R8)
- Hudson Bay Mountain Single Family Residential (R9)
- Hudson Bay Mountain Multiple Family Residential (R10)
- Bare Land Strata Residential (R11)
- Small Holdings (H1)
- Small Holdings - Additional Dwelling (H1A)
- Small Holdings - Industrial Shop (H1B)
- Large Holdings (H2)
- Agricultural (Ag1)
- Rural Resource (RR1)
- General Commercial (C1)
- Local Commercial (C1A)
- Highway Commercial (C2)
- Highway Commercial - Manufactured Home Dealer (C2A)
- Tourist Commercial (C3)
- Strata Resort Commercial (C4)
- Light Industrial (M1)
- Light Industrial - Contracting (M1A)
- Heavy Industrial (M2)
- Agricultural Industry (M3)
- Civic/Institutional (P1)
- Special Civic/Institutional (P1A)
- Recreation (P2)
- Special Recreation (P2A)
- Airport (A1)
- Wind Farm (WF)

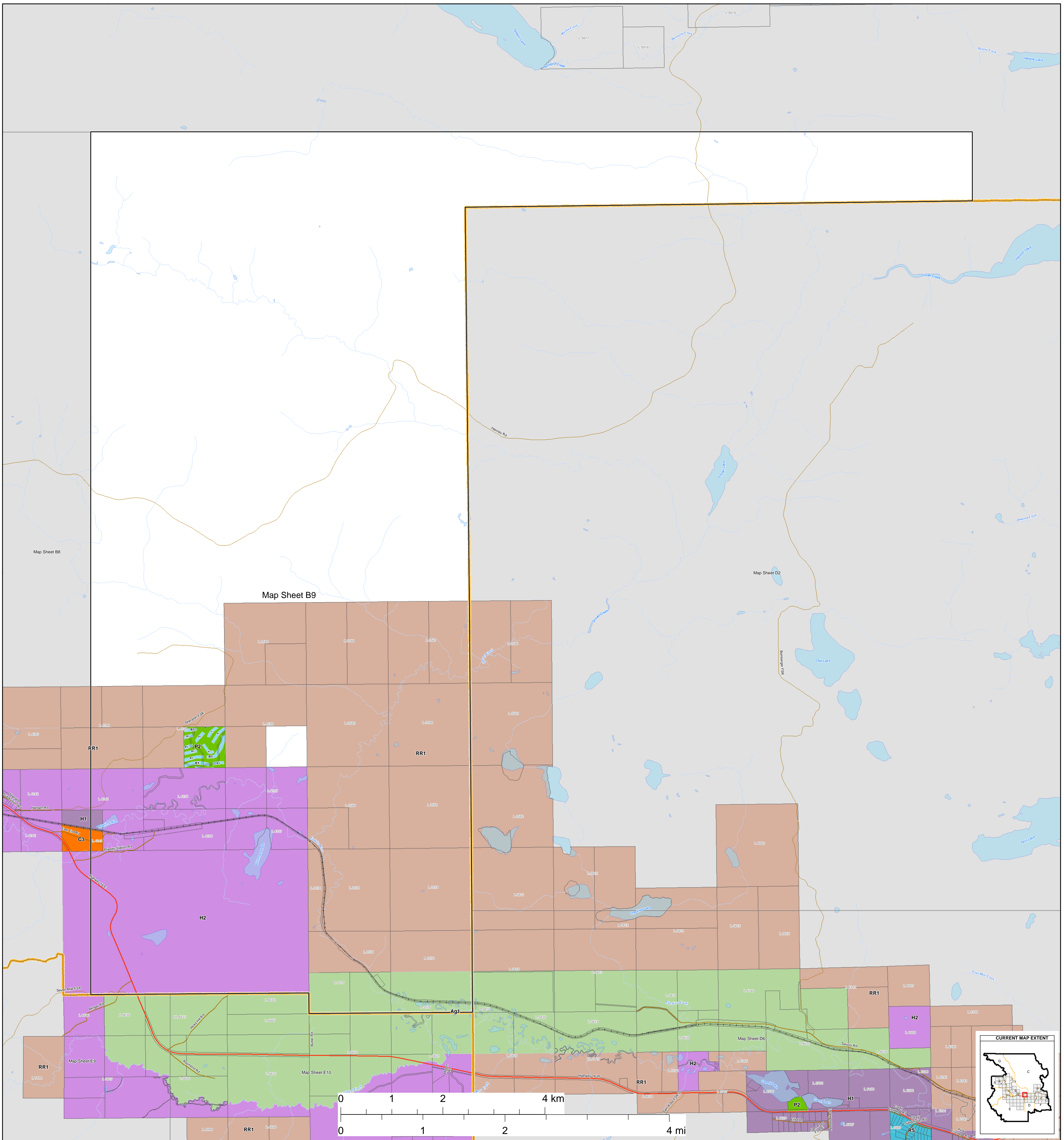
Other Features

- Municipalities
- Electoral Areas
- Cadastral
- Federal Indian Reserves

Transportation

- Street
- Highway
- Ferry
- FSR
- Secondary Road
- Railways

REVISEMENTS			
REV	DESCRIPTION	DATE	APPROVED



Zoning Bylaw 1800, 2020

Schedule "B"

Zoning Map Series

Electoral Area "B"

Produced by the Regional District of Bulkley-Nechako

Zoning

- | | | |
|--|---|--|
| <ul style="list-style-type: none"> Single Family Residential (R1) Multiple Family Residential (R2) Waterfront Residential I (R3) Waterfront Residential II (R4) Country Residential (R5) Rural Residential (R6) Manufactured Home Park (R7) Hudson Bay Mountain Recreational Residential (R8) Hudson Bay Mountain Single Family Residential (R9) Hudson Bay Mountain Multiple Family Residential (R10) Bare Land Strata Residential (R11) | <ul style="list-style-type: none"> Small Holdings (H1) Small Holdings - Additional Dwelling (H1A) Small Holdings - Industrial Shop (H1B) Large Holdings (H2) Agricultural (Ag1) Rural Resource (RR1) General Commercial (C1) Local Commercial (C1A) Highway Commercial (C2) Highway Commercial - Manufactured Home Dealer (C2A) Tourist Commercial (C3) Strata Resort Commercial (C4) | <ul style="list-style-type: none"> Light Industrial (M1) Light Industrial - Contracting (M1A) Heavy Industrial (M2) Agricultural Industry (M3) Civic/Institutional (P1) Special Civic/Institutional (P1A) Recreation (P2) Special Recreation (P2A) Airport (A1) Wind Farm (WF) |
|--|---|--|

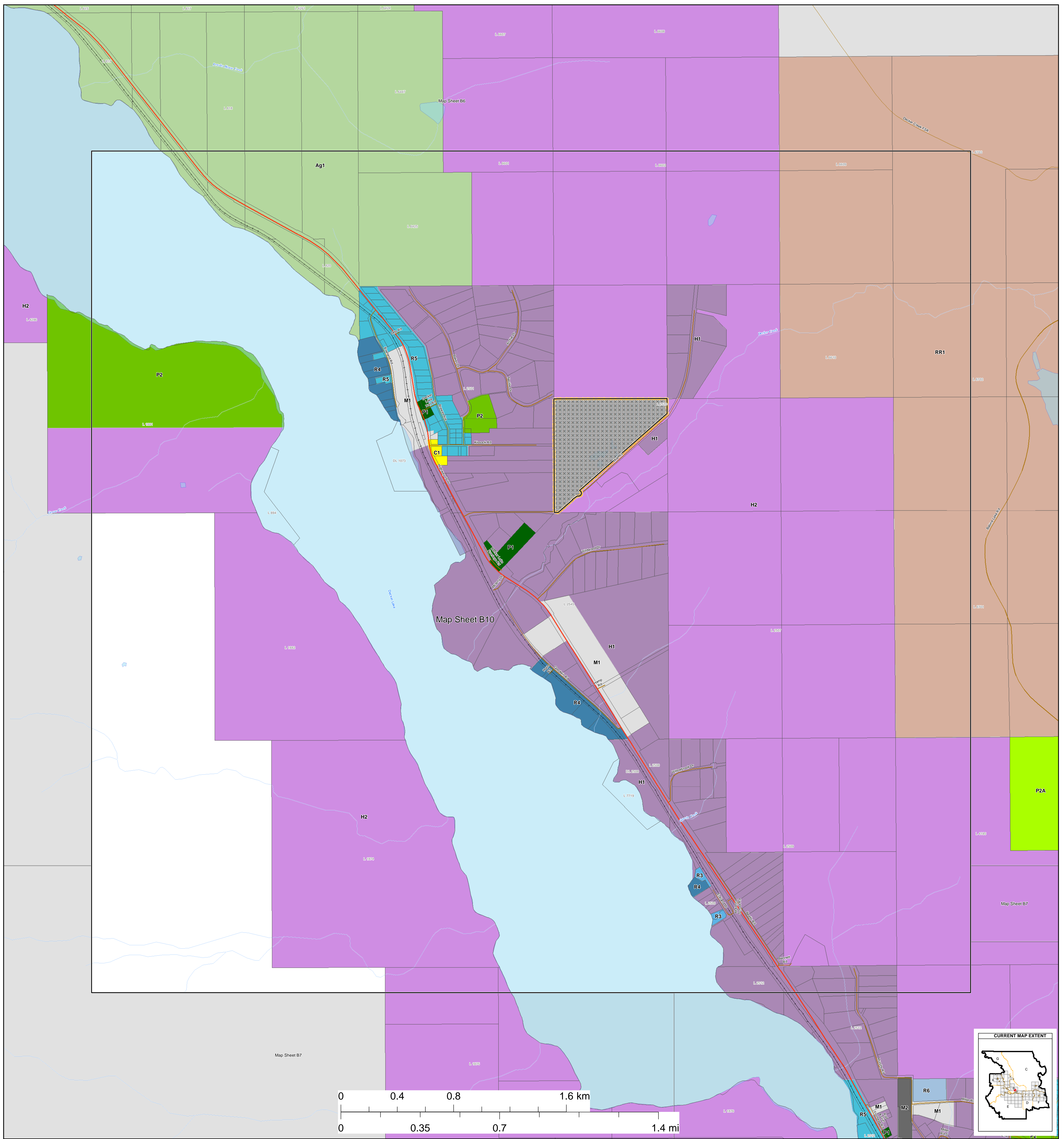
Other Features

- Municipalities
- Electoral Areas
- Cadastral
- Federal Indian Reserves

Transportation

- Street
- Highway
- Ferry
- FSR
- Secondary Road
- Railways

REVISEMENTS			
REV	DESCRIPTION	DATE	APPROVED



Zoning Bylaw 1800, 2020
Schedule "B"
Zoning Map Series
Electoral Area "B"

Produced by the Regional District of Bulkley-Nechako

Zoning

- Single Family Residential (R1)
- Multiple Family Residential (R2)
- Waterfront Residential I (R3)
- Waterfront Residential II (R4)
- Country Residential (R5)
- Rural Residential (R6)
- Manufactured Home Park (R7)
- Hudson Bay Mountain Recreational Residential (R8)
- Hudson Bay Mountain Single Family Residential (R9)
- Hudson Bay Mountain Multiple Family Residential (R10)
- Bare Land Strata Residential (R11)
- Small Holdings (H1)
- Small Holdings - Additional Dwelling (H1A)
- Small Holdings - Industrial Shop (H1B)
- Large Holdings (H2)
- Agricultural (Ag1)
- Rural Resource (RR1)
- General Commercial (C1)
- Local Commercial (C1A)
- Highway Commercial (C2)
- Highway Commercial - Manufactured Home Dealer (C2A)
- Tourist Commercial (C3)
- Strata Resort Commercial (C4)
- Light Industrial (M1)
- Light Industrial - Contracting (M1A)
- Heavy Industrial (M2)
- Agricultural Industry (M3)
- Civic/Institutional (P1)
- Special Civic/Institutional (P1A)
- Recreation (P2)
- Special Recreation (P2A)
- Airport (A1)
- Wind Farm (WF)

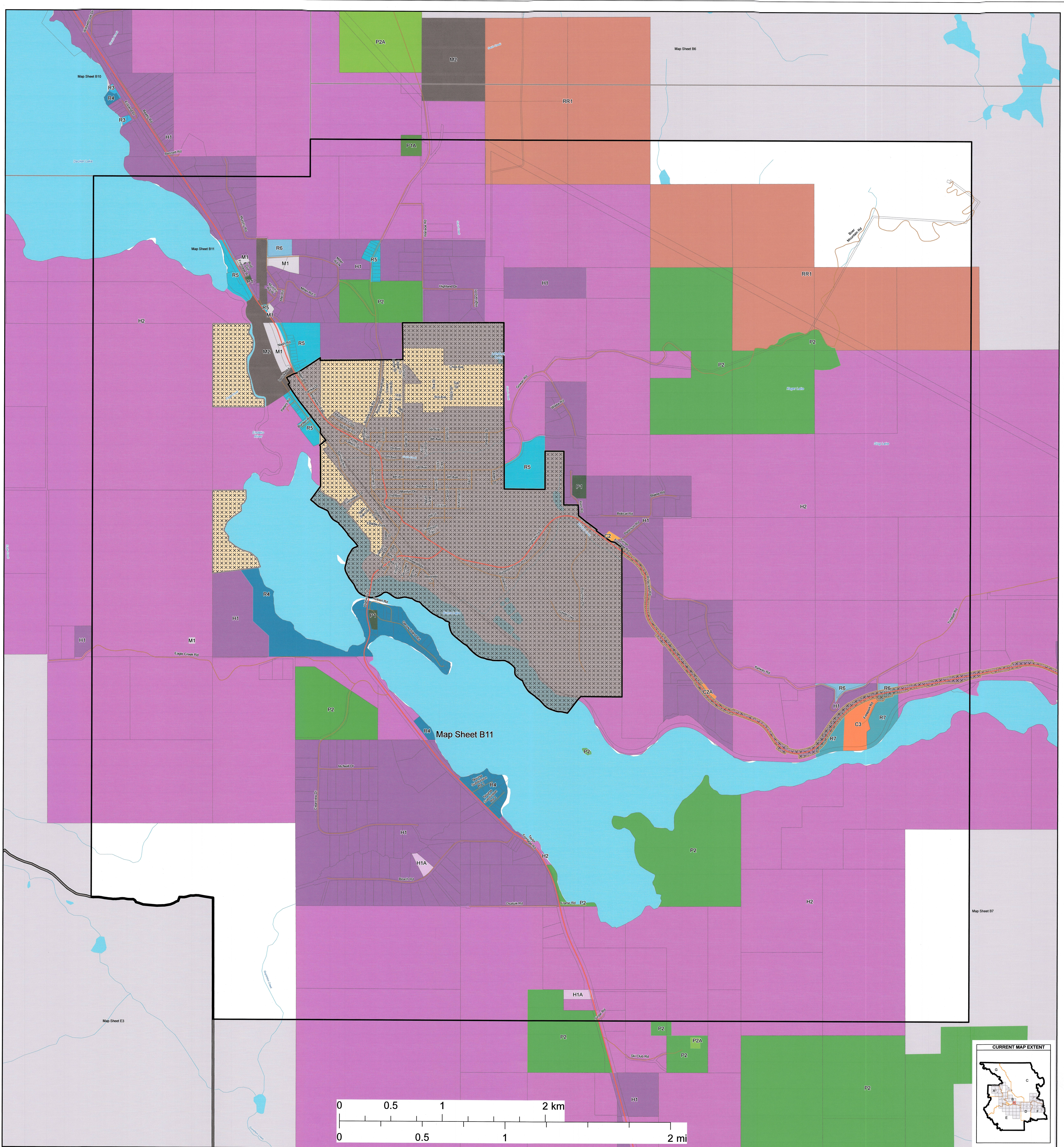
Other Features

- Municipalities
- Electoral Areas
- Cadastral
- Federal Indian Reserves

Transportation

- Street
- Highway
- Ferry
- FSR
- Secondary Road
- Railways

REVISIONS			
REV	DESCRIPTION	DATE	APPROVED



Zoning Bylaw 1800, 2020

Schedule "B" Zoning Map Series Electoral Area "B"

Produced by the Regional District of Bulkley-Nechako

Zoning

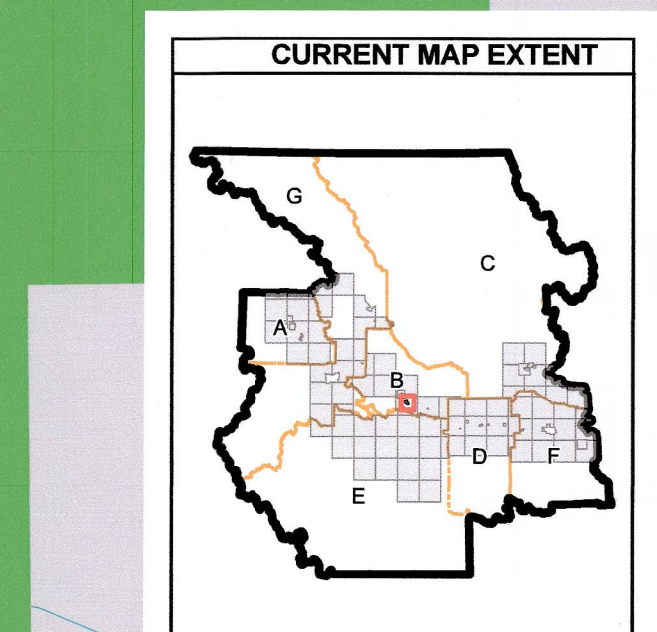
- Single Family Residential (R1)
- Multi Family Residential (R2)
- Waterfront Residential I (R3)
- Waterfront Residential II (R4)
- Country Residential (R5)
- Rural Residential (R6)
- Manufactured Home Park (R7)
- Hudson Bay Mountain Recreational Residential (R8)
- Hudson Bay Mountain Single Family Residential (R9)
- Hudson Bay Mountain Multiple Family Residential (R10)
- Bare Land Strata Residential (R11)
- Small Holdings (H1)
- Small Holdings - Additional Dwelling (H1A)
- Small Holdings - Industrial Shop (H1B)
- Large Holdings (H2)
- Agricultural (Ag1)
- Rural Resource (RR1)
- General Commercial (C1)
- Local Commercial (C1A)
- Highway Commercial (C2)
- Highway Commercial - Manufactured Home Dealer (C2A)
- Tourist Commercial (C3)
- Strata Resort Commercial (C4)
- Light Industrial (M1)
- Light Industrial - Contracting (M1A)
- Heavy Industrial (M2)
- Agricultural Industry (M3)
- Civic/Institutional (P1)
- Recreation (P2)
- Special Civic/Institutional (P1A)
- Special Recreation (P2A)
- Airport (A1)
- Wind Farm (WF)

Other Features

- Municipalities
- Electoral Areas
- Cadastre
- Federal Indian Reserves

Transportation

- Street
- Highway
- Ferry
- FSR
- Secondary Road
- Railroad



REV	DESCRIPTION	DATE	APPROVED
1	Amendment: 1946	15 Jul 2022	
2	Amendment: 1997	13 Jul 2023	
3	Amendment: 1998	13 Jul 2023	
4	Amendment: 2019	23 Nov 2023	